

**BOARD OF EDUCATION OF THE CITY OF LOS ANGELES
GOVERNING BOARD OF THE LOS ANGELES UNIFIED SCHOOL DISTRICT**

INNOVATION COMMITTEE
333 South Beaudry Avenue, Board Room
4:00 p.m., Thursday, November 18, 2021

The meeting shall be held through teleconferencing pursuant to the provisions of California Assembly Bill 361. Members of the public may observe the meeting [online](#) and offer public comment telephonically.

Committee Members

Ms. Tanya Ortiz Franklin, Chairperson
Mr. Nick Melvoin, Board Member
Ms. Kelly Gonez, Board Member

Board Secretariat Contact

Ebony Wilson
Tel: (213) 241-7002
Email: ebony.wilson@lausd.net

Method for Providing Public Comment and Accessing the Meeting

The Board of Education is committed to ensuring the health and safety of the community. As a precaution to help prevent the spread of COVID-19, there will be no speakers or visitors allowed into the Board Room. Only a limited number of staff along with Board Members who choose to attend in person, are allowed to be in the Board room. Members of the public may access the meeting online (http://lausd.granicus.com/MediaPlayer.php?publish_id=18)

The Board of Education encourages public comment on the items on this agenda and all other items related to the District. Individuals wishing to address the Innovation Committee must register to speak using the Speaker Sign Up website: <https://boardmeeting.lausd.net/speakers>. Registration will open 24 hours before the meeting. Up to 15 Public Comment speakers can sign up.

You may register online to provide comments and call in during the meeting but please consider using our alternative methods. Commenters can email all Board Members at boardmembers@lausd.net, or use the US Mail at 333 S. Beaudry Ave., Los Angeles, CA 90017, or leave a phone message at (213) 443-4472, or fax (213) 241-8953. Items received by 5 p.m. the day before the meeting will be distributed to all Board Members.

Speakers who have signed up on the Speaker Sign Up website for this meeting must:

1. Call 1-669-900-6833 and enter Meeting ID **812 3677 2511**.
2. Press #, and then # again when prompted for the Participant ID.
3. Remain on hold until it is your turn to speak. You can watch the meeting on the [live video stream](#) until your item comes before the Board.
4. Callers will be identified based on their phone number. You will need to call in from the same phone number entered into the sign-up form on the website. Callers will need to have their phone number ID displayed and may need to adjust their phone settings.
5. Callers will know to speak when receiving the signal that their phone has been removed from hold and or unmuted. Callers will then press *6 (Star 6) and be brought into the meeting.

Speakers will have three (3) minutes to speak. Please contact the Board Secretariat at 213-241-7002 if you have any questions.

AGENDA

1. [Welcome and Opening Remarks](#) Tanya Ortiz Franklin
Chairperson
2. [Budgeting for Equity, Short-Term Recovery and Long-Term Sustainability](#)Marguerite Roza
Director of Edunomics Lab and Research Professor
Georgetown University's McCourt School of Public Policy

Katherine Silberstein
Research Fellow
Edunomics Lab
Georgetown University's McCourt School of Public Policy

Public Comment

Adjournment

Requests for disability related modifications or accommodations shall be made 24 hours prior to the meeting to the Board Secretariat by calling (213) 241-7002.

Materials related to an item on this Agenda distributed to the Board of Education are available for public inspection at the Security Desk on the first floor of the Administrative Headquarters, and at:

<http://laschoolboard.org/11-18-21Innovation>

TAB 1

[Jump back to agenda](#)



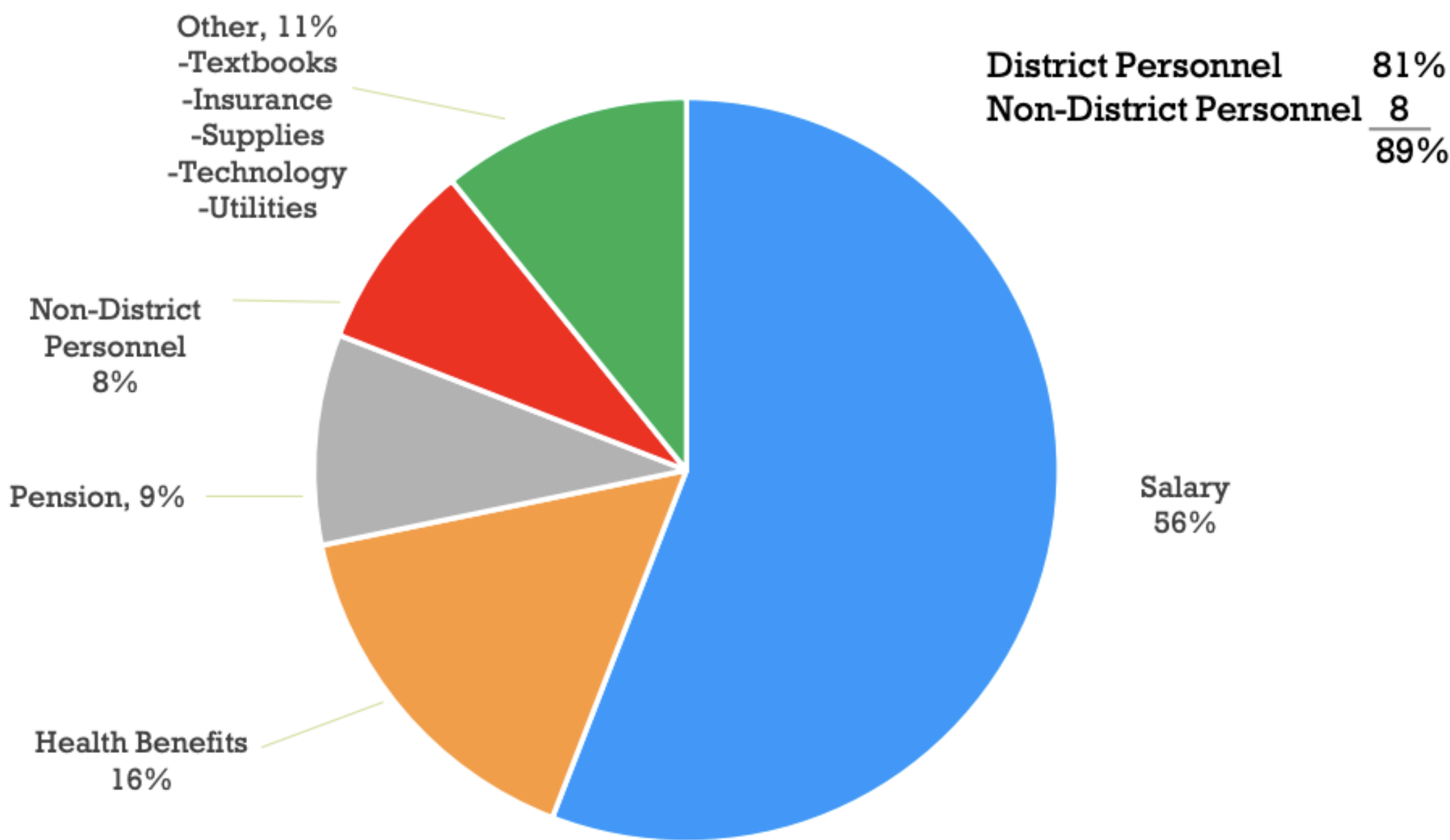
Innovating for Equitable & Sustainable Funding

1. What is the story of our current funding situation?
1. What are best practices and considerations for using COVID relief funds to support students recovery today and fiscal viability tomorrow?

LAUSD 2021-22 Budget



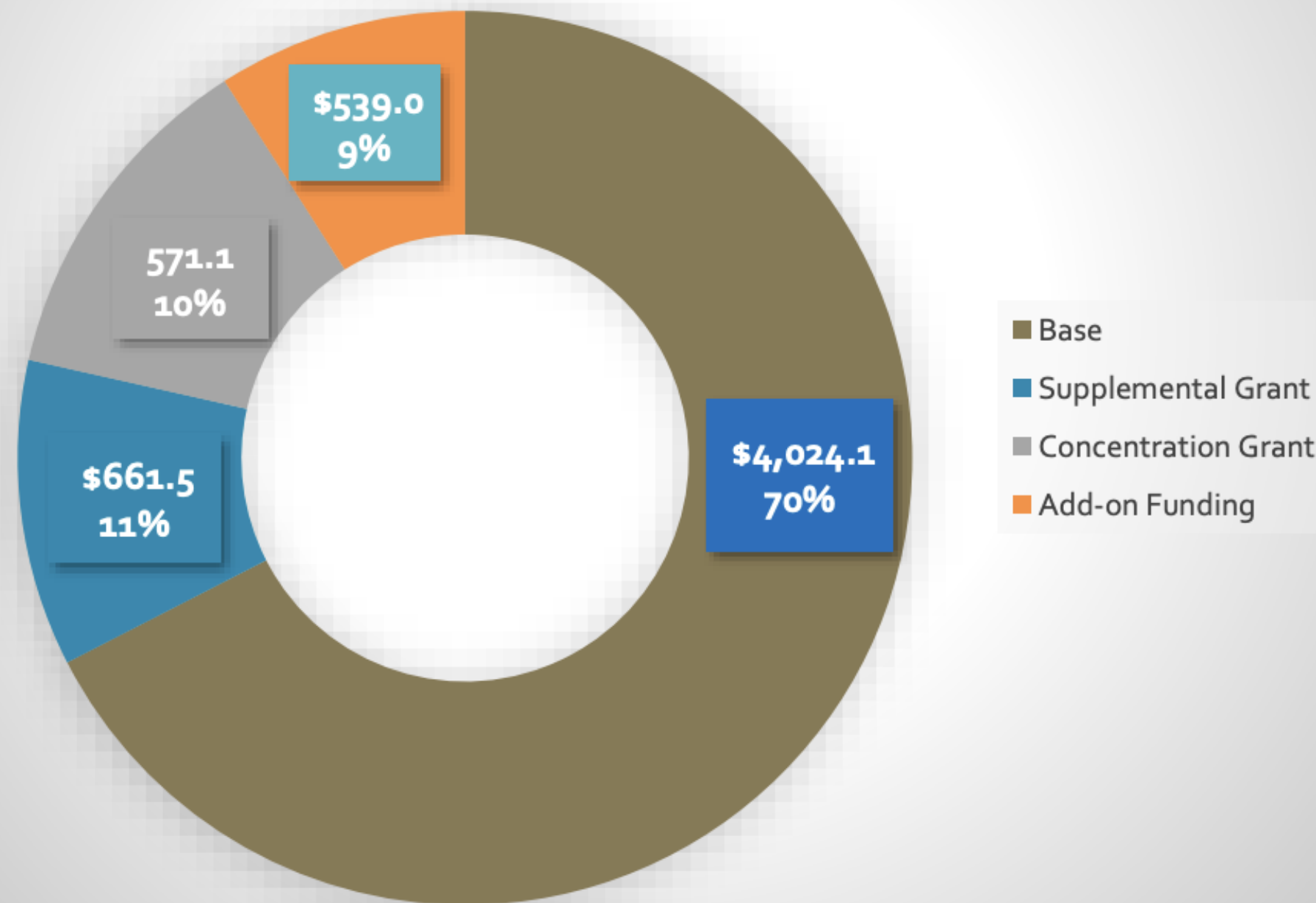
89% of Our Spending is On People



LAUSD 2021-22 Budget



LCFF Target Entitlement 2021-22=\$5,795.7 (amounts in millions)



Student Equity Needs Index 2018 - Refresh



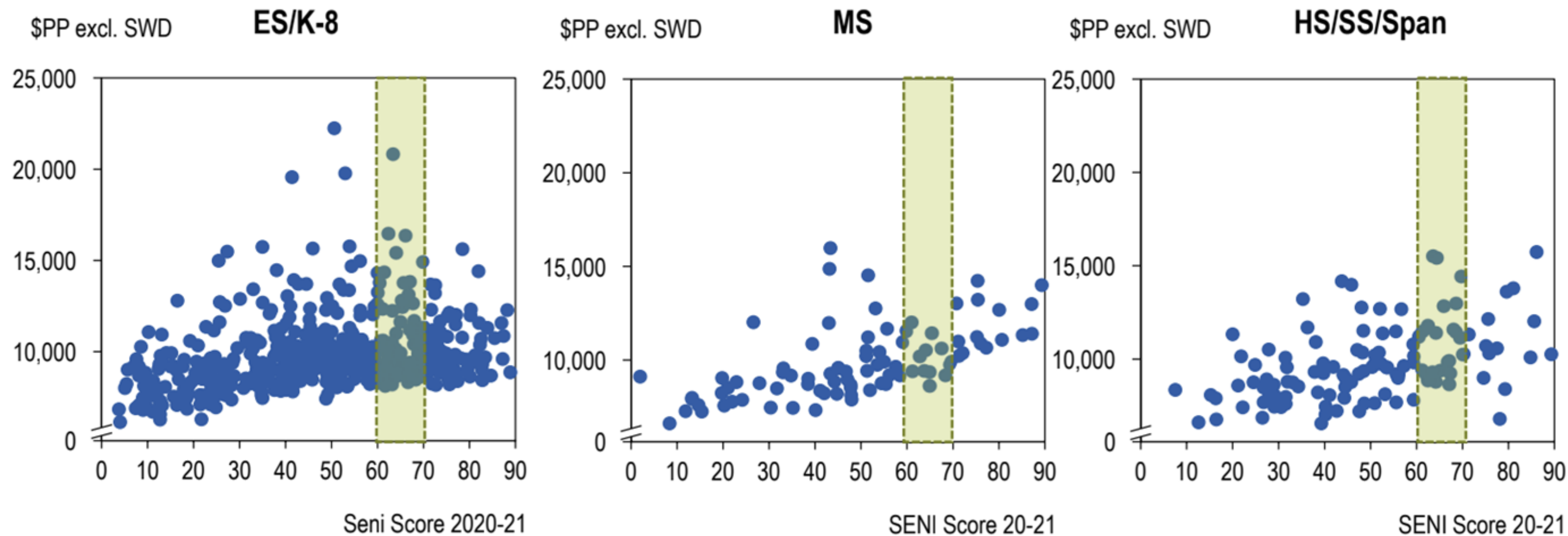
Student Equity Needs Index 2018

	Index 2.0 Indicators of Need	Data Range	Index Weight		
			HS	MS	ES
Highest	Percentage of Foster Youth	Annual	5%	5%	5%
	Percentage of Homeless Youth	Annual	5%	5%	5%
	Percentage of English Learners	Annual	5%	5%	5%
High	Percentage of Standard English Learners	Annual	5%	5%	5%
	Percentage of Low-Income S.W.D.	Annual	5%	5%	5%
	Percentage of Unduplicated Students	Annual	20%	20%	20%
Moderate	Suspension Rates	Annual	5%	5%	5%
	1 st Grade DiBELS	Annual			30%
	Incoming 6 th /9 th Grade Math SBAC	Annual	10%	15%	
Low	Incoming 6 th /9 th Grade ELA SBAC	Annual	10%	15%	
	Chronic Absenteeism	Annual	5%	5%	5%
	I-Star Reports	3-Year Avg.	5%	5%	5%
Lowest	Asthma Severity Rate	3-Year Avg.	5%	5%	5%
	Non-Fatal Gun Shot Injuries	3-Year Avg.	5%	5%	5%
	A-G Completion Rate (High School Only)	Annual	10%		

School budgets by SENI score



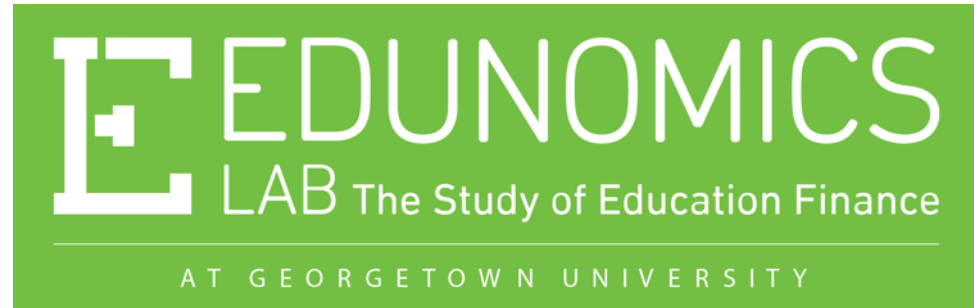
SY20-21 School-Reported Non-SWD Budgets: Per Pupil Dollars by SENI Score *(Excludes SWD specific \$s and Self-Contained SWD Population)*



Today, LA Unified allocates more funding to schools with higher student needs, however there is high variation within similar SENI score bands, even after excluding special education funds

TAB 2

[Jump back to agenda](#)



Budgeting for Equity, Short-Term Recovery and Long-Term Sustainability

November 18, 2021

Marguerite Roza @MargueriteRoza
MR1170@georgetown.edu

Katherine Silberstein @K_M_Silberstein
KS1747@Georgetown.edu

FY20 Funding Generated Through LCFF

Unduplicated Pupil Percentage (UPP) = students who (1) are English learners, (2) meet income or categorical eligibility requirements for free or reduced-price meals under the National School Lunch Program, or (3) are foster youth. “Unduplicated count” means that each pupil is counted only once even if the pupil meets more than one of these criteria.

$$= \frac{\# \text{ Unduplicated Pupils}}{\text{Total Enrollment}}$$

Base Grant Funding calculations:

- K-3rd = (\$8,503)*(Enrollment)
- 4-6th = (\$7,818)*(Enrollment)
- 7-8th = (\$8,050)*(Enrollment)
- 9-12th = (\$9,572)*(Enrollment)

Supplemental Grant Funding = (Base Grant Funding)*(0.2)*(UPP)

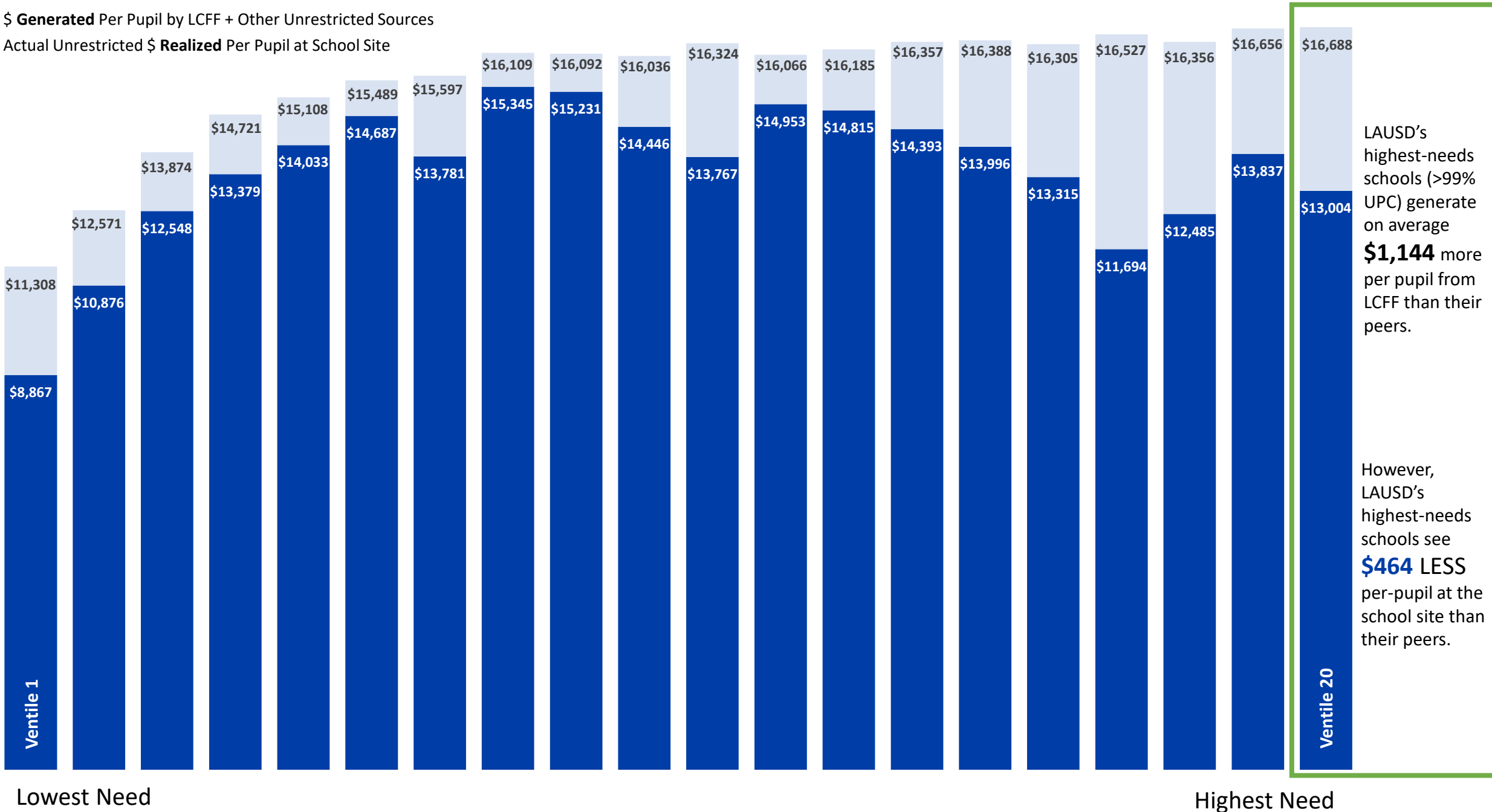
Concentration Grant Funding = (Base Grant Funding)*(UPP - 0.55)*(.5)

→ This calculation is only made for schools with > 55% UPP

Total Generated LCFF \$ per pupil =
$$\frac{\text{Base} + \text{Supplemental} + \text{Concentration (if applicable)}}{\text{Total Enrollment}}$$

Los Angeles USD: How Much of LCFF Generated Funds Are Realized at the School Site?

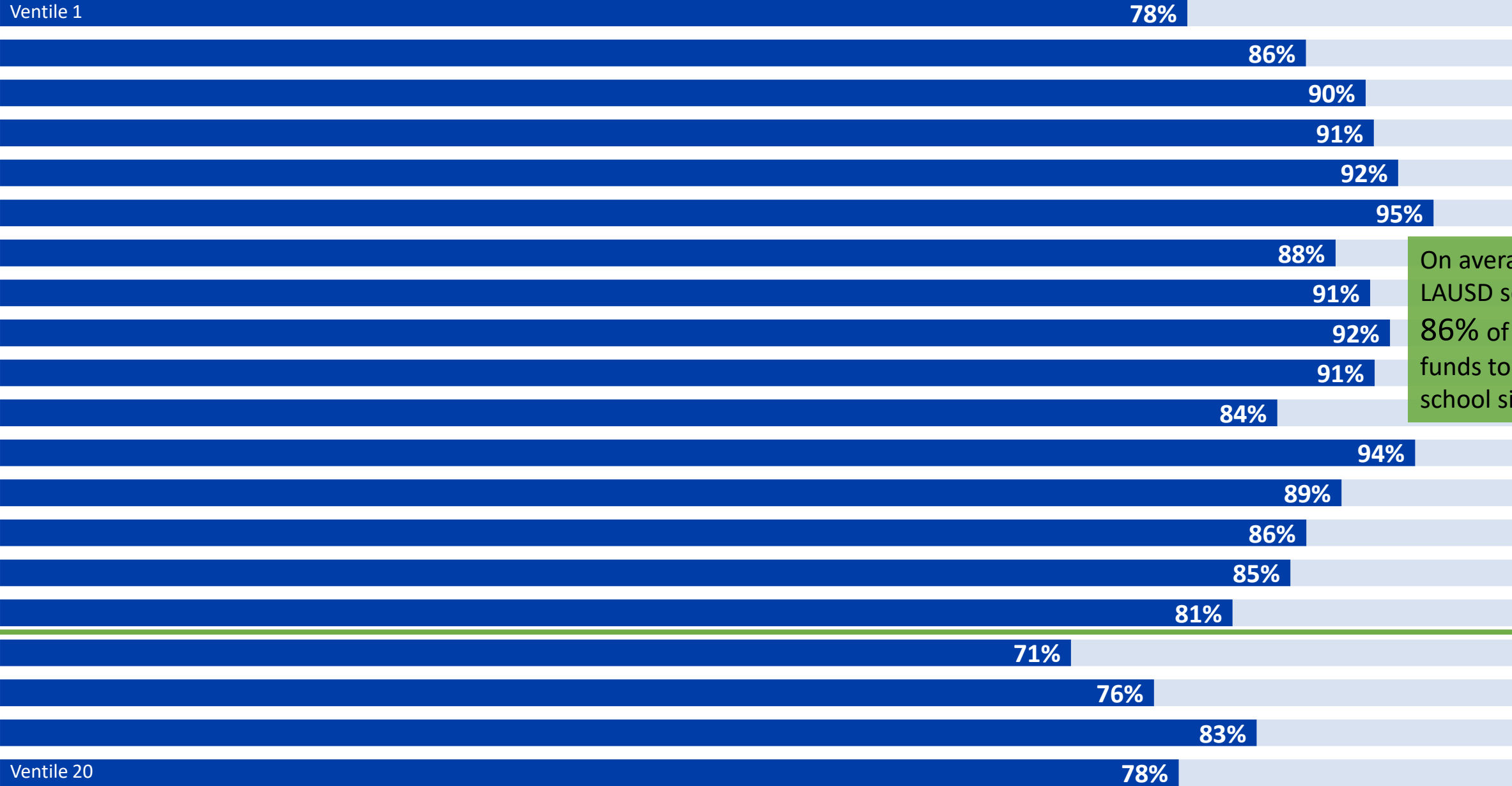
- \$ **Generated** Per Pupil by LCFF + Other Unrestricted Sources
- Actual Unrestricted \$ **Realized** Per Pupil at School Site



Los Angeles USD: What Portion of LCFF Funds Generated by Students is Realized at the School Site?

100%

Increasing level of need (%UPC)
↓

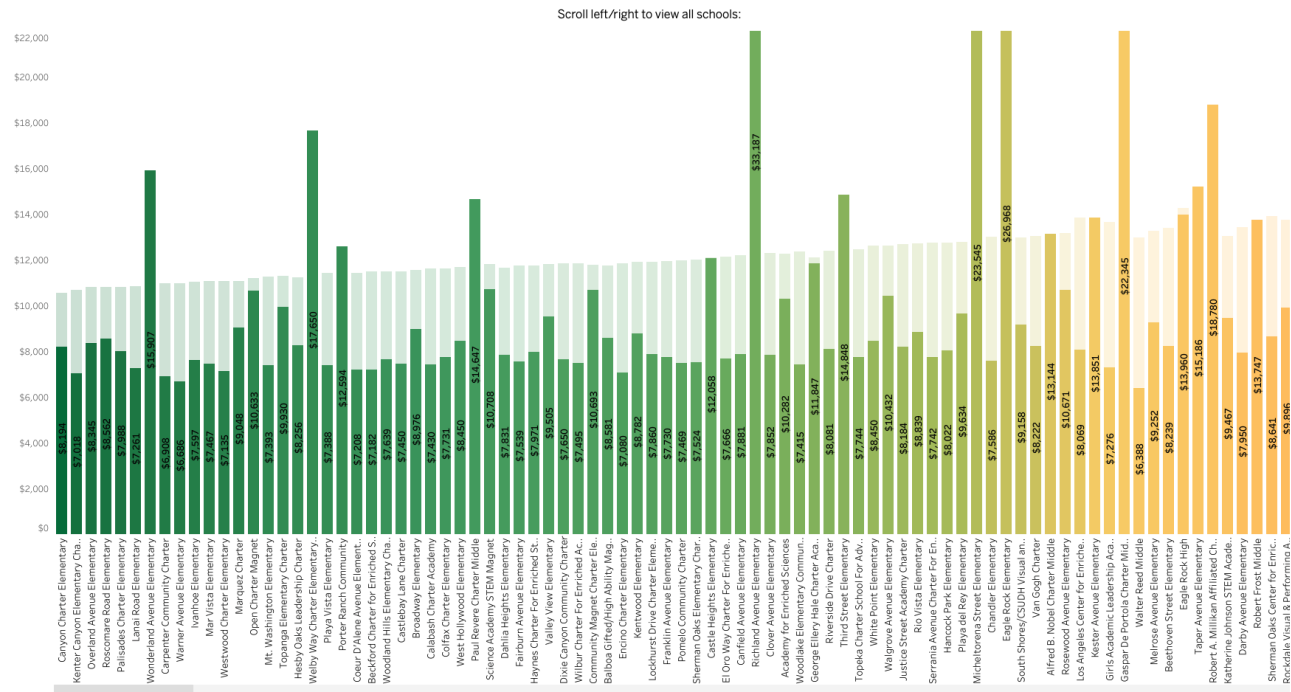


On average, LAUSD sends 86% of LCFF funds to school sites.

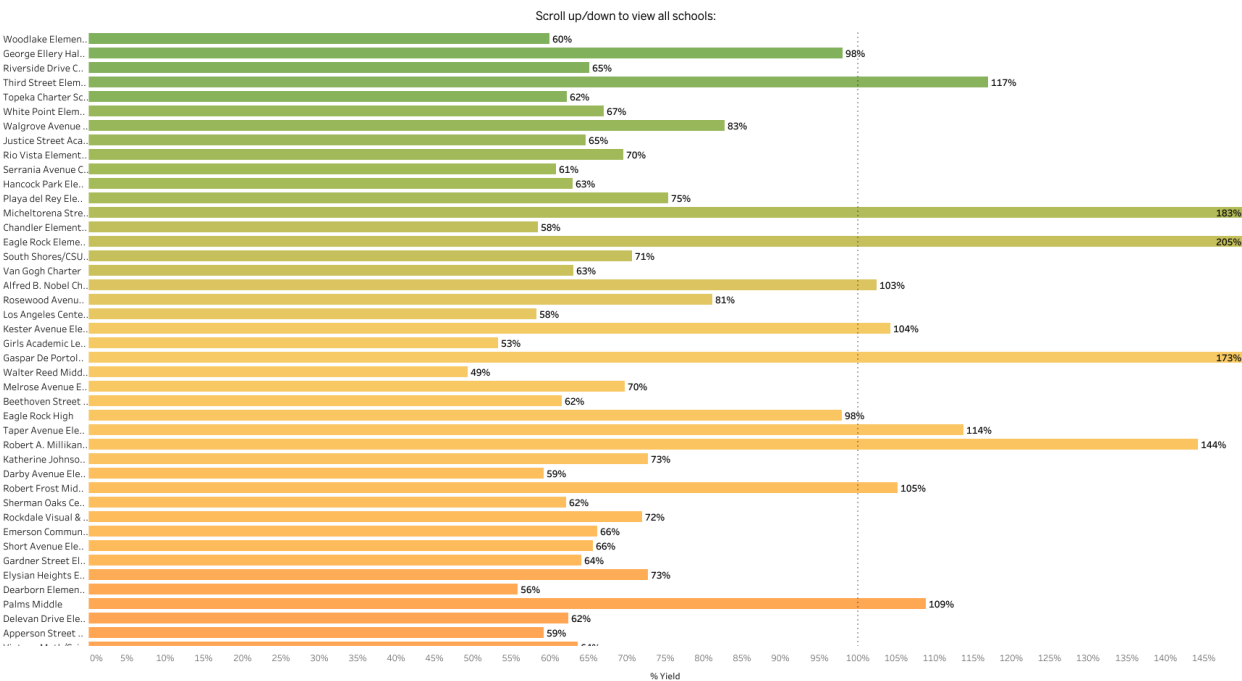
The schools in the higher needs ventiles realize a smaller share of their generated LCFF dollars at the school site than their peers.

Visit our school-by-school interactive tool!

Los Angeles USD: How Much of LCFF Generated Funds Are Realized at the School Site?



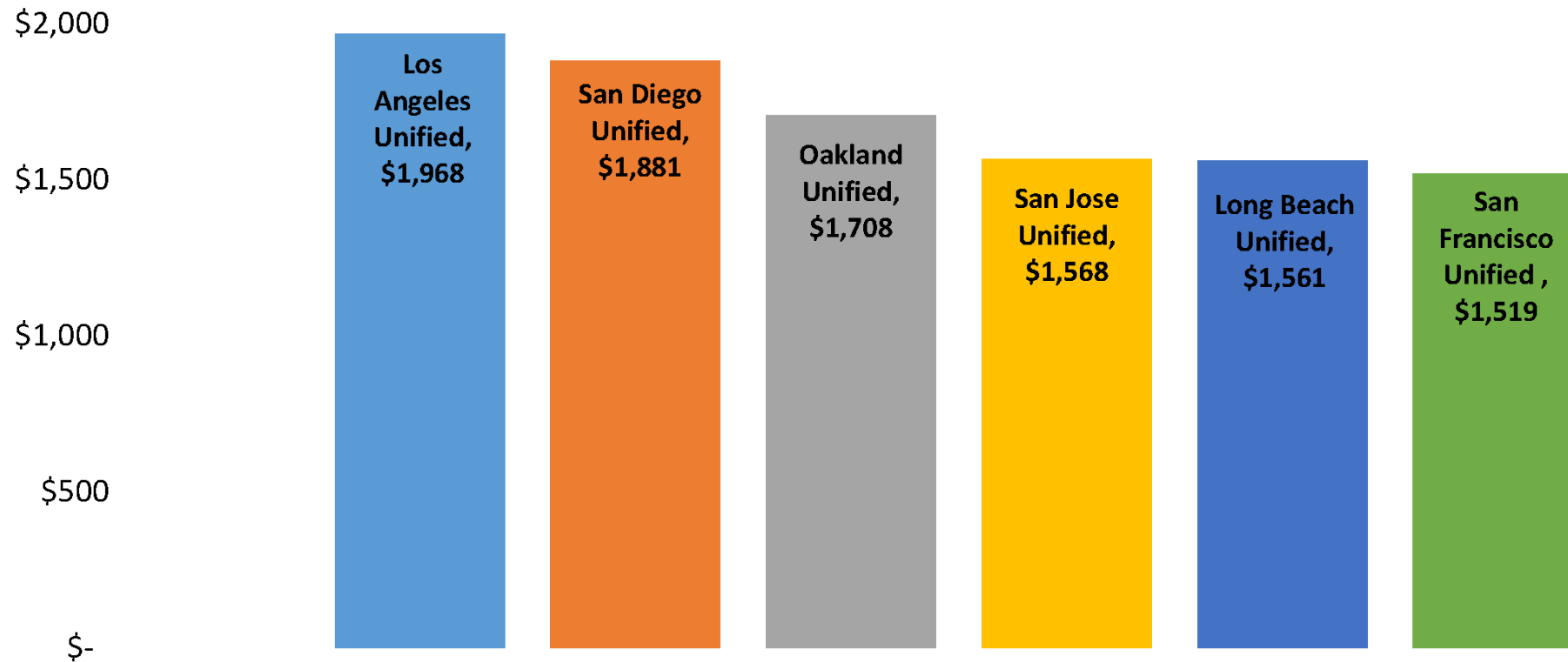
Los Angeles USD: What Portion of LCFF Funds Generated by Students is Realized at the School Site?



<https://public.tableau.com/app/profile/edunomicslab/viz/LAUSDArraysLCFFvsUnrestricted/xSchoolArray>



Per Pupil Health Care Cost Comparison FY 2016/17



Per Pupil Difference	\$87	\$260	\$400	\$407	\$449
Impact to LAUSD's 500K enrollment	\$43M	\$130M	\$200M	\$203M	\$224M

Weighted Premium Rate Comparison¹

School District	Active		Retired Under 65		Retired Over 65	
	Employer	Employee	Employer	Retiree	Employer	Retiree
Los Angeles Unified	\$13,141	\$ -	\$18,529	\$ -	\$5,840	\$ -
Long Beach Unified	\$17,221	\$ -	\$15,670	\$ -	\$8,320	\$ -
Oakland Unified	\$11,517	\$2,184	\$ -	\$ -	\$ -	\$ -
San Diego Unified	\$15,666	\$ -	\$ -	\$9,278	\$ -	\$5,535
San Francisco Unified	\$7,488	\$2,239	\$16,238	\$1,735	\$4,448	\$1,255
San Jose Unified	\$14,860	\$1,096	\$960	\$8,964	\$ -	\$ -

<https://boe.lausd.net/sites/default/files/HealthCareUpdateAddressingtheHardChoices.pdf>



Districts are using new compensation structures...

Flat dollar amounts (to more evenly distribute funds among junior/senior teachers)

Non-recurring stipends or bonuses
(to avoid future obligations)

...And using compensation to tackle specific problems

Targeted sums to **fill shortage areas** (to address specific labor needs)

Signing bonuses & moving costs to **attract new teachers**

Bonuses tied to retention (after 1, 2, or 3 years) to **stem teacher turnover**

Stipends for **extra work** (tutoring, summer school, or extending the school day)

Pay tied to **other priorities** (such as enrollment or vaccination)



Beware of adding recurring costs!

Instead of recurring expenses:

- **New hires** (e.g. nurses, counselors, VP, teachers, tutors)
- **Base pay raises:** Across-the-board % raises, COLAs
- Increased **benefits**
- Permanent calendar changes
- Changes to class sizes

Consider one-time expenses:

- ✓ **Stipends** (e.g. for tutoring, summer school)
- ✓ **Contractors** (e.g. nurses, tutors)
- ✓ **One-time** hazard pay
- ✓ One-time summer school
- ✓ Temporarily added weeks of school
- ✓ Pay for family efforts

